

Twickenham & Richmond TRIBUNE



Radnor Gardens Tree (About to be chopped down by Council)
Photo by Berkley Driscoll

28th June 2024

T&RT

Contents

TickerTape: Come to choir's annual summer concert The Tree Agency	Richmond Community Choir
Local Picture Postcard Column - Normansfield Hospital - Teddington	Alan Winter
Crusader Travel	
Green Party Advert	
Letters	
Conservative Party Advert	
Council hike parking charges	
Active Travel in the London Borough of Richmond upon Thames 2024	Teresa Read
Twickenham's Tug-of-War	
St Margarets Fair	
Refurbished Class 458 trains enter service on South Western Railway network	South Western Railway
Teddington Village Fair	
Design a poster for display in Germany, France and Richmond	Richmond Council
Report any sightings of Asian hornets	Richmond Council
Come to free art exhibition and workshop celebrating mental wellbeing	Art & Soul
Candidates standing at the election in Richmond upon Thames	
Summer Fete!	Twickenham Vets
Music events for the perfect summer vibe	Landmark Arts Centre
Twickers Foodie - Kitchen Update - OXO	Alison Jee
Sunborn, Gibraltar	
To say or not to say?	Deep Patel
Mark Aspen Review - One Million Tiny Plays about Britain	Quentin Weiver
Mark Aspen Review - The Magic Flute	Mark Aspen
Mark Aspen Review - Prince/David	Heather Moulson
Taste of Twickenham	The Eel Pie Club
Opera in the Garden	Alison Jee
Maurice Duruflé - Requiem / John Rutter - Requiem	Hampton Choral Society
St Mary's Launches Weekly Student Film Premieres	St Mary's University
Art and Design Students Showcase End-of-Year Exhibition	Richmond upon Thames College
The UK' Top Urban Picnic Spots Revealed	City Dwellers
U20 Men Confirm Team to Face Argentina	RFU
The Brentford players at Euro 2024: Where to watch round of 16 matches	Brentford FC
BA passengers left bagless as experts offer tips on handling lost luggage	Claims.co.uk

Editors:
Berkley Driscoll
Teresa Read

TickerTape - News in Brief

Come to choir's annual summer concert

On Sunday 30 June, residents are invited to join Richmond Community Choir's annual event for a delightful evening.



Performed by an enthusiastic band of local singers of various ages and abilities, the concert features a diverse selection of songs from different eras.

Event details:

- **Date:** Sunday 30 June
- **Time:** 6.30pm
- **Location:** All Hallows Church, Chertsey Road, Twickenham
- **Price:** £6 adults, children are free

Tickets can be purchased on the door using cash.

Visit the [Richmond Community Choir's website](#) to find out more.



The Tree Agency

darryl parkin

The Treehouse
25 King Edwards Grove
Teddington, Middlesex TW11 9LY
Telephone 020 8274 0107
Mobile 07960 123580
Fax 020 8274 0119
info@thetreeagency.co.uk
www.thetreeagency.co.uk



Local Picture Postcard Column - Part 255

By Alan Winter

Normansfield Hospital - Teddington

We are going to place the hospital in Kingston Road, Teddington, although the early 20th century postcards shown both suggest the Hospital was in Hampton Wick.

Normansfield was founded as a hospital for the mentally handicapped in 1868 by Dr John Haydon Langdon-Down (1828-1896). Both John and his wife, Mary, had a great love of the theatre with a passion to pass this onto future generations. And so, the building of Normansfield Theatre commenced in 1877. The entertainment hall was of grand splendour with proscenium stages, notable architectural ornament and exquisite design which was uncommonly ambitious of the time.



John Haydon Langdon-Down was the first doctor to identify Mongolism, now known as Down's syndrome. Patients (adults and children) were looked after in small groups with provision for kindergarten training, teaching, occupational work, music and drama, dances, church services and holidays. In 1951, Normansfield was taken into the NHS, with Dr Norman Langdon-Down, grandson of the founder, as the first Medical Superintendent.



Normansfield was home to 200 mentally handicapped people. Residents lived in houses (4 x 12 bed units were opened in 1981) and in the main building; and a new Activity Centre was also opened in 1981, with occupational therapy, recreational therapy and speech, art and music therapy. There were also visiting dentists, physiotherapists, chiropodists and hairdressers.

Following the final closure of Normansfield in 1997, the site was sold by the Health Authority for residential development, including four houses specifically for people with learning disabilities (12-18 Langdon Park). But the old Normansfield Theatre (Grade II* listed as a rare example of a private Victorian theatre containing original painted scenery and other ornate fixtures and fittings) was protected and is now part of the wonderful Langdon Down Centre which is the HQ of the Down's Syndrome Association and home to the Langdon Down Museum of Learning Disability which opened in January 2012.

My search for old postcards continues. I am always looking for old postcards and old photograph albums etc. The postcards can be British or Foreign, black and white or coloured and of places or subjects. If you have any that are sitting unwanted in a drawer, in a box in the loft or in the garage or under a bed, please contact me on 07875 578398 or alanwinter192@hotmail.com I would like to see them and I pay cash!

Crusader Travel

020 8744 0474

crusadertravel.com

Escapology Experts

info@crusadertravel.com



Your friendly local Travel Agency
established in Twickenham since 1966

With over 50 years experience we pride ourselves on being able to offer an unrivalled service with attention to detail. Come and have a chat with us in our cosy office off the Church Street Square, we are open 6 days a week from 11am until 6pm (Closed Sunday)



TOP MARKS

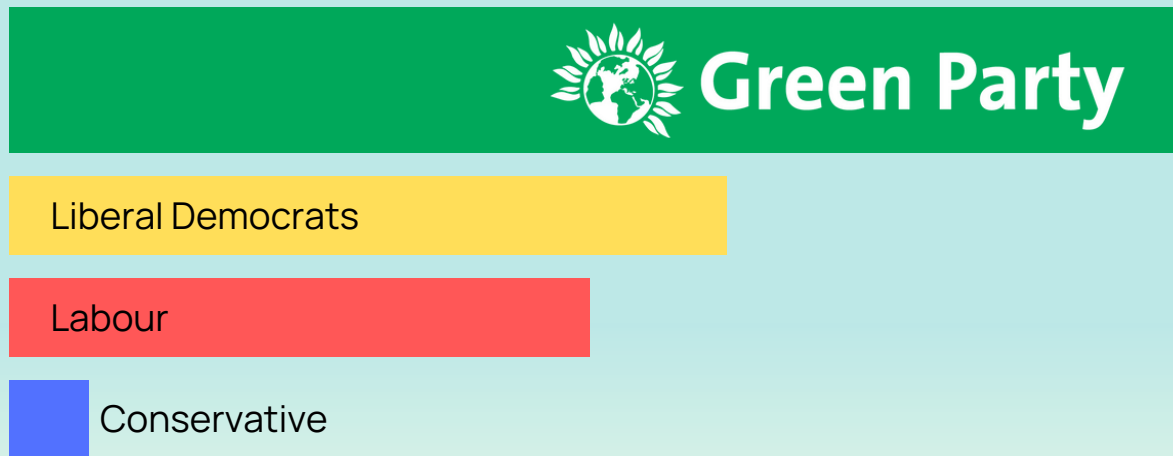
FOR GREEN PARTY

say Friends of the Earth and Greenpeace

The Green Party manifesto ranks highest across all issues, scoring 39 points out of a possible total of 40.

Nature and environment

10/10



Climate and energy

1st

Housing and transport

1st

Justice and democracy

1st

WHO DO YOU TRUST TO HOLD KEIR STARMER TO ACCOUNT?

SOURCE: Friends of the Earth, General election 2024 manifestos: final scores.

Promoted by Rae Vermeulen on behalf of Chantal Kerr-Sheppard (Green Party), c/o 124 Lisbon Ave, Twickenham, TW2 5HN.
Promoted by Alexis Hatto on behalf of Chas Warlow (Green Party), c/o 37 Lock Road, Richmond, TW10 7LQ.

YOUR GREEN TEAM



HOLDING THE **LIB DEMS** TO ACCOUNT LOCALLY

The Green Party is the only elected opposition on Richmond Council

Your Green Councillors have pushed the Liberal Democrats to...



put **climate** at the heart of all decisions



stick to **recycling** targets



act to support **renters**



take more control over **social housing**



reduce social care costs for the most disadvantaged



ensure stronger action on **air pollution**

Tactical voting websites say...

VOTE WITH YOUR HEART



Green Party

Chas
Warlow

Richmond Park candidate

Chantal
Kerr-Sheppard

Twickenham candidate

HOLDING **LABOUR** TO ACCOUNT NATIONALLY

Promoted by Rae Vermeulen on behalf of Chantal Kerr-Sheppard (Green Party), c/o 124 Lisbon Ave, Twickenham, TW2 5HN.
Promoted by Alexis Hatto on behalf of Chas Warlow (Green Party), c/o 37 Lock Road, Richmond, TW10 7LQ.

The Editor,

Raw Sewage

In a general election campaign that has stooped as low as any that I have experienced in my fairly long lifetime, never have I seen it so unprincipled as the current electioneering. I feel I must express my disgust with the local Liberal Democrats, who really are scraping the barrel.

This week, I received through my letterbox a pamphlet that is three quarters black ink against a lurid green background, proclaiming that Conservatives have dumped raw sewage in our lakes, rivers and seas. I can't recall seeing many seas, or even lakes in Twickenham, but let's concentrate on the rivers.

So, now I know why we haven't seen any Conservative canvassers on our doorsteps. They are all too busy shovelling muck in the river!

What I can recall is that, over the last few months, all the local political parties, including the Conservatives, have been up in arms against the new Thames Water proposals to discharge treated water from Mogden Lane into Teddington weir. Typically, with no factual basis to go on, politicians all stripes think they know more about water control than qualified and experienced water engineering specialists.

All this is a bit thick coming from the Lib-Dems, who have used their one-party state in Richmond upon Thames to destroy the riverside in Twickenham town centre, with a scheme that sweeps away nature to be replaced by concrete.

This dirty-tricks electioneering really does reach new depths. Who's shovelling the muck now? We floating voters don't want of be floating up to our necks in this sort of ordure.

It is destructive campaigning without anything positive to say. And it comes from a party who, in another pamphlet, arrogantly trumpet, "We are set to win here". Oh, were pride to come before a fall. Perhaps the Liberal Democrats need to be reminded that an election is an expression of democracy.

Equality, liberality is not served by throwing insults, such as saying in the same pamphlet that Conservatives stink. Insults are thrown when there are no proper arguments.

I am asking for my name and address not to be published. I don't want anything even nastier than this pamphlet to be pushed through my letter-box.

(Name Withheld)
Twickenham

Dear Editors,

Card payment only parking meters

Councils have a statutory duty to ensure that their actions do not discriminate against the elderly or those who are vulnerable. Therefore I am dismayed to learn that Richmond Council is proposing to introduce parking meters that will be card payment only in front of the Hospital Bridge shops in West Twickenham. They say that it is a Consultation but we all know what that means, because they explained recently that their consultations are not meant to be listened to by them, but are done merely to “inform” them.

The local shops in the Hospital Bridge Parade, which include a post office, general store, butchers, chemist, and fish and chip shop, are appalled as many of their customers are elderly and will be affected by this. Bruce’s Butchers in particular will be badly affected as many of his loyal customers come from outside the Borough, are elderly and don’t know how to use Ringo, or even have smart phones. Neither do they have a Richmond Card – though LibDem councillors are on record as saying that they would like to abolish this as well! It would be tragic if the rush to drive people out of their cars by smothering the Borough with CPZs and parking meters, both useful cash cows, could also result in driving long standing, much loved businesses out of business, as could very well prove the case with Bruce’s and other shops and businesses facing this same problem across this Borough.

Best wishes,
Sue Hamilton-Miller
West Twickenham resident

Dear Tribune,

legalise cannabis?

We live in a Borough completely and absolutely controlled by the Liberal Democrats.

I was perturbed to hear an interview with Sir Edward Davey, Leader of the Liberal Democrats, where he said the Liberal Democrats want to legalise cannabis.

This is a naïve and dangerous path to take.

Do our Liberal Democrat councillors in our borough subscribe to this idiocy, and if they do why haven’t we seen it in their proselytising leaflets and campaigning?

Twickenham Riverside Resident
(Name and Address Supplied)

VOTE FOR



Jonathan

HULLEY

The **BEST** choice for **TWICKENHAM**

The Hamptons, Heathfield, St. Margarets,
Strawberry Hill, Teddington & Twickenham

3

Good reasons to VOTE for Jonathan HULLEY

1. **NO VAT ON INDEPENDENT SCHOOL FEES**

Labour's spiteful plan to slap 20% VAT on independent school fees will be harmful to families in this constituency. Inevitably it will mean larger class sizes in state schools as parents can no longer afford those fees.

2. **LOCAL HOMES FIT FOR THE NEXT GENERATION**

Building the right kind of affordable homes in the right places so our children can live here too. And we must bring housing associations to account over poor housing quality. New housing needs to be built on brownfield land, not on green belt.

3. **OPPOSING THE WATER ABSTRACTION PLAN FOR TEDDINGTON**

I am totally opposed to the River Thames abstraction plan at Teddington. I will work constructively with residents, special interest groups and Thames Water to shape an alternative solution.

 **Vote Conservative**

Promoted by Hilary Smith on behalf of Jonathan Hulley
both at 90 York Road, Teddington, Middlesex, TW11 8SN.

Council hike parking charges

The Richmond Council is set to implement a significant change that will directly affect all residents who drive. As of Monday, 1st July, the discount residents enjoy when using council-run parking facilities will be partially removed, marking a substantial shift in the local parking landscape.

Currently, residents enjoy 30 minutes of free parking or a 10% reduction in the parking charge, increasing to 20% for those over seventy-five. This discount was introduced in 2011 after a long campaign by traders in St Margarets who found parking charges deterring residents from using their local high street. Research commissioned by the council at the time found significant economic leakage to Kingston and Westfield London due to residents preferring to drive further afield to escape high parking charges.

Furthermore, parking charges are set to increase by 10% in most of the borough, but on-street parking in Zone D (Twickenham) will increase by 19%, which, when you combine the increase and the loss of the discount, most of the borough faces a 20% hike, whilst Twickenham's on-street parking is taking a 30% hit.

Some residents feel the council is trying to reduce parking demand before the Twickenham Riverside Development takes place to mask the impact of not providing underground parking to replace the lost parking places on the embankment.

Cllr Alexander Ehmann has justified this steep increase, citing the return to the normal parking demand in Twickenham as the primary reason. He also highlighted the need to encourage people to use public transport rather than their cars, a key factor discussed at the council meeting earlier this year.

At the same meeting, the Green Party pressed for the council to scrap the 30-minute free parking.

The Liberal Democrats have said it will stay for now, but eventually, they see it being removed as it does not fit with their priority to reduce car use.

The surcharge for multiple residential parking permits is also increasing. The current multiples of the base permit price are 1.5x for second permits and 2x for third and subsequent permits. From the 1st of July, they will be 2x for second permits and 3x for third and subsequent permits, a 50% increase.

The same increase in multiple was originally intended to apply to business permits; however, it was scrapped at the last minute due to concerns raised about "potentially disproportionate and unreasonably large impact upon businesses within the Borough." Business permit prices for the third permit in zone A1 would have reached over £4,500, but with the cancellation of the increase in the multiplier, it will now be just over £3,000 after the 10% general uplift in charges has been applied.

The schedule of parking charges can be viewed [HERE](#)

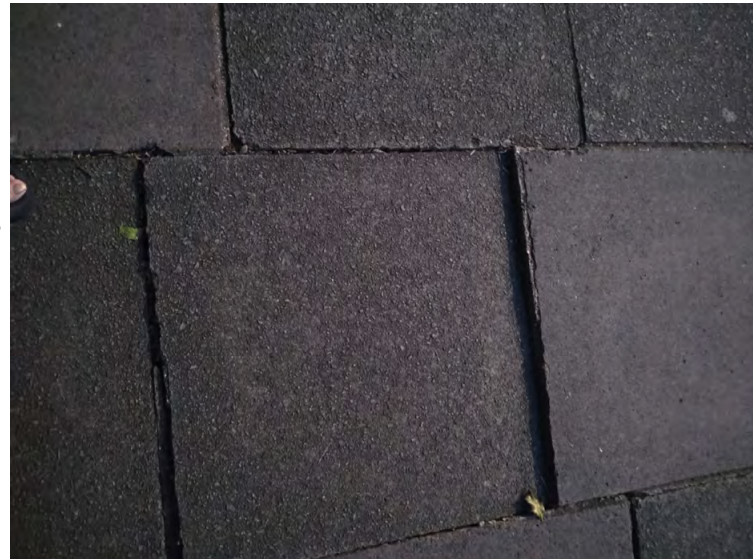


Active Travel in the London Borough of Richmond upon Thames 2024

Teresa Read

Further to articles in the Tribune, over the last two weeks, about the state of disrepair of pavements in the Twickenham area there has been a third report this week by a reader suffering from a fall caused by the perilous paving stone outside Archdeacon Cambridge School, opposite Twickenham Green and the cricket pavilion. As the Council states in this year's LBRUT report on Active Travel Strategy: "Most roads within the borough have pavements, but the width and condition of these pavements is widely variable."

However, despite numerous paving stones that are not fit for purpose, the Council's 2024 vision is as follows: "The aim of this strategy is for more trips to be undertaken within LBRuT by walking and cycling, as both standalone trips and as part of longer trips involving public transport." "Richmond residents to do at least the 20 minutes of active travel they need to stay healthy each day" – of course, as long as you do not fall foul of the pavements.



The Council also states: "The struggle can be to understand where existing infrastructure is not fit for purpose." "Pavements are the core of the pedestrian network and at the heart of the borough's public realm, particularly in town centres."

Cllr Rhi Lee has been following up complaints about pavements mentioned in previous Tribune articles and has persuaded officers to look again at broken pavements leading to and from a busy bus stop next to Twickenham Green. We have also been informed there is a small area of footway opposite the junction with Vicarage Road to be made safe.

I understand that small areas of paving next to Twickenham Green on the Hampton Road side will also be made safe. However, it seems, according to Council officers, that much of the cracked pavement does not meet the criteria for replacement.

As mentioned above, the London Borough of Richmond upon Thames Active Travel 2024 report states that the objective of "active travel is to stay healthy" but is this realistic without urgently needed proactive investment in the infrastructure?



Twickenham's Tug-of-War

The annual event, organised by Discover Twickenham, was well supported by the local community and transformed Church Street, Twickenham, into a tug-of-war fun festival on Friday, 21st June.

The Tug of War, a sport with roots in ancient civilisations, is a powerful symbol of teamwork and endurance.

Jonathan Hulley (pictured) shared his joy at being part of the winning team. It was a fantastic event; hats off to the organisers.



St 2024

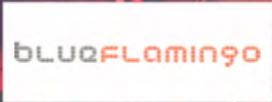
Margarets

FAIR

Saturday 6th July

12-6 pm

Generously supported by



Refurbished Class 458 trains enter service on South Western Railway network



South Western Railway has introduced the first of its refurbished Class 458 trains on Monday 24 June.

The Class 458/4s will initially be used to operate eight-car services between London Waterloo and Weybridge via Brentford, and London Waterloo and Twickenham.

17 of SWR's Class 458 fleet have been refurbished with a further 11 to follow. Each four-car unit has 234 seats in two-by-two formation, all with seat back tables and charging points, as well as space for two wheelchair users. Each carriage also has two tables fitted with wireless charging points.

There are also two first class compartments with two tables and 12 seats, however, these have been declassified for suburban services and will be available to customers holding standard class tickets.

The units' refreshed interiors, along with their updated SWR livery, mean they now closely resemble SWR's 444 and 450 Desiro fleets.



The refurbished trains were originally intended for use on the route between London Waterloo and Portsmouth Harbour via Guildford.



However, following the COVID-19 pandemic and subsequent changes in customer travel patterns, the fleet will temporarily operate services on SWR's suburban network, as SWR works towards the full introduction of its fleet of 90 new Arterio trains.

Neil Drury, South Western Railway's Engineering and Infrastructure Director, said:

"We are very pleased to introduce the first of our refurbished Class 458 units. Their interior refresh, including improved seating and newly installed tables

and charging points, will make a noticeable difference to our customers' journeys. The Class 458/4 fleet will play an important role as we work towards the full introduction of our fleet of 90 new Arterio trains. The first unit to enter service today will operate services between London Waterloo and Weybridge via Hounslow, with subsequent units being deployed where customers need them most."

**South Western
Railway**

TEDDINGTON VILLAGE FAIR

Sunday 30th June 12 - 5:30 pm

Udney Hall Gardens, off Langham Rd.



The Village Fair is returning to Teddington again this year. Come and help us celebrate 100 years of Rotary in Teddington and join in all the fun.

- ◆ Music and Dance on our stage and performance area
- ◆ Fun and Games on stalls from all our local community groups
- ◆ Food and drink from local businesses.
- ◆ The finish line for the United Response pram race!

Organised by your local Rotary club together with the Teddington Society, St Mary with St Alban, and the local Scouts and Guides, this year's fair will be one to remember. Updated information is available on our website. Search "Teddington Rotary" or use QR code.

Rotary  **Teddington & the Hamptons**

100 YEARS OF SERVICE, 1924 - 2024

Registered Charity No: 1031422



StMARY with StALBAN
PARISH CHURCH of TEDDINGTON



Girlguiding
Teddington District



Scouts



THE TEDDINGTON SOCIETY
For the Love of Teddington

Design a poster for display in Germany, France and Richmond

From Richmond Council

Calling all of our young artists! Local students are invited to take part in an exciting summer poster competition to celebrate the reaffirmation of our twinning agreement with Germany and France.

The reaffirmation of [Richmond's twinning](#) with the towns Fontainebleau in France and Konstanz in Germany takes place every five years, with great celebrations. In 2025, it's Richmond's turn to host an exciting weekend of festivities.

We need the help of local students aged 16 and under with an artistic flair to help us bring this celebration to life through a poster design.

The winners will be invited to a special Mayoral event in the autumn term, and the winning and commended posters will be exhibited leading up to and during the twinning celebrations.

The overall winning poster design will be used as the basis for publicity of festivities in June 2025 across the whole borough, and in France and Germany. These will include sports fixtures, concerts, plays, dancing, art exhibitions, marching bands, parades and picnics - a great opportunity for budding artists!

Competition details:

- **Poster format:** A3 portrait
- **Required text on the poster:** Celebrating our Friendship with France and Germany, Richmond upon Thames, 6-9 June 2025
- **Submission deadline:** Sunday 15 September 2024

Submit digital photos of the artwork via email to info@visitrichmond.co.uk or send your copies by post to Tourism, Investment & Marketing Manager, Richmond Council, 44 York Street, Twickenham, TW1 3BZ



Report any sightings of Asian hornets

From Richmond Council

The Asian hornet is a highly aggressive predator of native insects, threatening our honeybees and other pollinators. If you spot any Asian hornets, you should report it.

Asian hornets pose no greater risk to humans than a bee, but they are a threat to our native honey bee. They are originally from China and the Indian subcontinent, and have been sighted sporadically in the UK since 2016. Recently, there has been a confirmed sighting in East London.

The Asian hornet is smaller than our native hornet with a darker abdomen and distinctive lower yellow legs. Nests can be found in tall trees in both urban and rural areas as well as garages and sheds, but rarely in holes in walls or in the ground.



To help protect our native honey bees, you can submit any sightings - visit our [Asian hornet sightings page](#) to find out how to do this.

Come to free art exhibition and workshop celebrating mental wellbeing

From Art & Soul

Residents are invited to a free art exhibition and workshop from Wednesday 26 to Saturday 29 June 2024, exploring how the arts enhance our wellbeing.

The exhibition, hosted by [Art & Soul](#), will showcase over 50 artworks created by participants of the charity's art activity.

Dedicated to the life and work of long standing Art & Soul member and artist Martha Beresford, the exhibition also features a free family workshop for participants to enjoy the fun of artmaking.

Exhibition details:

- **Date:** Wednesday 26 to Saturday 29 June 2024
- **Time:**
 - 1 to 5pm on 26, 27 and 28 June
 - 10am to 2pm on 29 June
- **Location:** St Mary's Church, Church Street, Twickenham, TW1 3NJ
- **Price:** Free

Workshop details:

- **Date:** Saturday 29 June 2024
- **Time:** 11am to 1pm
- **Location:** St Mary's Church, Church Street, Twickenham, TW1 3NJ
- **Price:** Free

[Register for workshop](#)

Art & Soul is a charity providing a range of free therapeutic arts workshops and creative activities to help improve mental health.



Candidates standing at the election in Richmond upon Thames

London Borough of Richmond upon Thames

Election of a Member of Parliament for

Richmond Park

Notice is hereby given that:

1. A poll for the election of a Member of Parliament for Richmond Park will be held on Thursday 4 July 2024, between the hours of 07:00 am and 10:00 pm.
2. One Member of Parliament is to be elected.
3. The names, home addresses and descriptions of the Candidates remaining validly nominated for election and the names of all persons signing the Candidates nomination paper are as follows:

Name of Candidate	Home Address	Description (if any)	Names of Signatories	
			Proposers(+), Seconders(++) & Assentors	Proposers(+), Seconders(++) & Assentors
CORYTON Laura	(address in The London Borough of Brent)	Labour Party	Woolston Matthew D(+) Cullen Sam Hodson Paul H Lever Mala Mellor Julie T	Bates Francine(++) McAlpine David Woolston Rebecca M White Marion Lever Alec
FRENCH Chris	The Mitre, 20 St Marys Grove, Richmond Upon Thames, Surrey, TW9 1UY	The Mitre TW9	Craigie Gillian M(+) Rice Christopher P Venn Emma Holder Carly C F Edge James	Walmsley Joel P(++) Cronin Gerard Bannister Josephine Hennessy Alexandra E Goodwin David
GEZDARI Sara	(address in Richmond Park)	The Conservative Party Candidate	Webb Susan(+) Urquhart Nicola Tudway Robert H Faircloth-Mutton Philip J Minto Caroline J	Johnstone Elizabeth A(++) Urquhart John Gretton Anne J Murray Robert L Goldstein Ralph S
HARRISON Richard	(address in Richmond Park)	Social Democratic Party	Greenwood Susan J(+) Gilmeanu Tamara A Gilmeanu Simona C Shaw Kathrin A Stead Julia	Heffernan Tessa(++) Morrison Margaret A Peck Oliver P W Trivett Claire Camardo Marco
HEARN Michael	(address in Stevenage)	Reform UK	Hunt Kylie(+) Starling Anna V Chrispin James D Hunt Justin Scales Adam F	Starling Alexander C(++) Chrispin Emma J Denin Elizabeth M Fox Mark D Conroy Nicholas M
OLNEY Sarah	(address in Kingston & Surbiton)	Liberal Democrats	Cambridge Julia(+) McNulty-Howard Anna M Smith Rachel I Mander Kieran Burton Helen	Frost Penelope(++) Renton Simon A Sweet Carol A Pyne Richard Varley Christopher
WARLOW Chas	2 Russell Gardens, Richmond, TW10 7QE	Green Party	Coleman Danielle A C(+) Henry Katherine D B Hatto Alexis O Hatto John Harrison Margaret	Warlow Solange C(++) Crookdake Nicola Hatto Wendy Stephens Mary Nash Elizabeth

London Borough of Richmond upon Thames

Election of a Member of Parliament for

Twickenham

Notice is hereby given that:

1. A poll for the election of a Member of Parliament for Twickenham will be held on Thursday 4 July 2024, between the hours of 07:00 am and 10:00 pm.
2. One Member of Parliament is to be elected.
3. The names, home addresses and descriptions of the Candidates remaining validly nominated for election and the names of all persons signing the Candidates nomination paper are as follows:

Name of Candidate	Home Address	Description (if any)	Names of Signatories		Names of Signatories		Names of Signatories	
			Proposers(+), Seconders(++) & Assentors	Proposers(+), Seconders(++) & Assentors	Proposers(+), Seconders(++) & Assentors	Proposers(+), Seconders(++) & Assentors		
BRUCE Tom	7 Kneller Gardens, Isleworth, TW7 7NP	Labour Party	Abercrombie Lucy J(+) Gadd Derek J Eckert David A Loewenstein Caroline Guichard Stephen	Johnson Christopher(++) Monk Loraine Tutchell Eva Fuller Sabrina S MacKenzie Elizabeth G	(+)	(++)	(+)	(++)
HULLEY Jonathan Roger	(address in The Windsor Constituency)	The Conservative Party Candidate	Davey Andrew John(+) Goodwin Brian L Harrison Katrina J Osborn Kenneth Porter David	Dryja George(++) Johnson John Marlow David J Tewatia Manmohan Blaszowski Fiona J	Howe Catherine(+) Jones Derek Arbour Tony Hackett Roger J Hamilton-Miller Susan R	Majumdar Nupur(++) Seymour Martin J Arbour Caroline A Hackett Angela J Hamilton-Miller Jeremy	Foster Elizabeth(+) Jowit Robin A Magee Mahvash Terrington Derek H Lamb Simon	Rowles Jon P(++) Magee John C Marlow Philip E Lamb Sara M Dryja Helena T
KERR-SHEPPARD Chantal Lyn	(address in Twickenham)	The Green Party	Saunders Monica J(+) French Christopher Gore Jonathan Dhanjal-Adams Kiran L Bennett Richard J	Wren Caroline S(++) Vermeulen Rae Lattek Christine M U Jamison Margaret Thorne Mrak Ethan E	(+)	(++)	(+)	(++)
MALIK Umair	83 Uxbridge Road, TW13 5EQ	Workers Party	Haq Rafiq-Ul(+) Haq Asma S Wilcox Thomas Dixon Lauren D Mountain Jean M	Haq Nargis S(++) Dryden-Jones Hannah C Lyons Bruce R Mountain Frederick Lamium Ossama A A	(+)	(++)	(+)	(++)
STARLING Alex	(address in Richmond Park)	Reform UK	Earley Elizabeth A(+) Lailey Richard Rowles Kevin Struthers Rodger D Lovatt David M	Earley James P(++) Lailey Deborah P Sheridan John R Jones Oliver P Lovatt Heidi G	(+)	(++)	(+)	(++)
WILSON Munira	(address in Twickenham)	Liberal Democrats	Roberts Gareth(+) Robertson Rachel Sengupta Dhruv Breaks Andrew J Key Christopher	Bevan Robin P(++) Juriansz Alan Wilson Jane Giesler Philip R Vaughan David J	(+)	(++)	(+)	(++)

SUMMER FETE!

EVERYBODY WELCOME!

**Help us to raise much needed
funds for
Animal Rescue and Care,
Twickenham**

**Saturday 29th June
11-3pm**

*At Twickenham Vets
58 Hampton Road
Twickenham
TW2 5QB*

***RAFFLE* *CAKE STALL* *ARC TEDDY TOMBOLA
& STALL* *PIMMS & SCONES*
FACE PAINTING *KID'S TREASURE HUNT*
*SURGERY TOURS***

Music events for the perfect summer vibe

From Landmark Arts Centre

Various music events are happening at Landmark Arts Centre this summer, ranging from band music, cabaret, orchestra, choir and classical music performances.

Mark Harrison Band

The show will be performed by Mark Harrison's band which features the extraordinary musicianship of Mark Harrison, Charles Benfield (double bass) and Ben Welburn (drums/percussion), who form a unique and acclaimed rhythm section.

- **Date:** Saturday 29 June
- **Time:** 7.15pm

Find out more about [Mark Harrison Band at the Landmark](#).



High Summer

Hosted by the enchanting West End songstress Ivy Paige, the show promises a night of unparalleled wonder and excitement. Come along as the legendary burlesque icon, Vicky Butterfly, weaves her mesmerising magic alongside jaw-dropping acts direct from Cirque du Soleil.

- **Date:** Friday 5 July
- **Time:** 8pm

Find out more about [High Summer at the Landmark](#).

Richmond Orchestra

From the heart-stirring melodies of "West Side Story" and "My Fair Lady" to the timeless tunes of "The Sound of Music" and beyond, the concert will feature a selection of pieces that have defined generations of theatre-goers.

- **Date:** Saturday 6 July
- **Time:** 6.45pm

Find out more about [Richmond Orchestra at the Landmark](#)

Sing Out! Landmark Choirs Summer Gala Concert

In this annual summer event, resident choirs Landmark Singers, Landmark Sound and Mansong will be performing a wide variety of music encompassing traditional folk songs, world music, jazz, pop and more.

- **Date:** Thursday 11 July
- **Time:** 7.30pm

Find out more about [Landmark Choirs Summer Gala Concert](#).

Thames Philharmonia

Performed by the Thames Philharmonia and the exceptional artistry of Soo-Yeon Ham, the concert features a captivating programme that showcases the emotional depth and technical brilliance of two monumental works from the Romantic era.

- **Date:** Saturday 20 July
- **Time:** 6.45pm

Find out more about [Thames Philharmonia at the Landmark](#).



Kitchen Update - OXO

I recently visited an excellent trade exhibition - **Exclusively** - that showcases some of the latest products for the kitchen and home. I visited quite a few stands and gleaned stacks of information on various products that I'll soon share with you.

To start, here are a few of the brilliant products I found on the **OXO** stand.



The **OXO Microfibre Spray Mop** is a godsend. It brings together a mop and the cleaning solution, and is a fabulous standby for everyday, quick cleans of hard floors, especially when pets or other members of the family bring muddy footprints in from the garden. It's an integrated bottle with spray function, flat mop head and small scrubber for stubborn stains. The pivoting microfibre head can reach around every corner, and the pad is machine washable. An extra bonus, for stubborn stains, is a simple 'step on' pedal to release the scrubber for easy spot-cleaning. RRP £40 Available from Lakeland and Amazon



The **OXO Good Grips Deep Clean Brush Set** is another very clever product. It features two brushes for easily scrubbing all those hard-to-clean places, and corners, where dirt builds up. Both brushes feature sturdy nylon bristles and soft, comfortable non-slip grips. The Deep Clean Brush Set is also great for nooks and crannies in the kitchen and bathroom – behind the stove top, grouting, and more. The set comprises a large brush, with integral thumb pad to allow you to apply maximum scrubbing force, a smaller brush with a more compact bristle head and pointed bristle profile, and on the end of this is a wiper blade to really get into those nooks and crevices. Around £9 from John Lewis, Lakeland or Amazon

When it comes to storage, do have a look at these modular, airtight containers. Decluttering rooms can deliver all manner of emotional and physical benefits, whether it's bringing about a feeling of calm or boosting productivity knowing everything is in its place. But with so many different rooms to organise and a whole host of items to store - from food supplies through to pet food and cleaning equipment - finding a solution that works can be challenging. That's where the **OXO POP** collection is great. Airtight, space-efficient and stackable, this award-winning storage system's ideal for dried food and all manner of other products. With a modular design that enables each container to be stacked together and signature push-button airtight seal, the collection is made to keep things neat, visible, tidy and close to hand. Featuring curved corners for smooth dispensing, handy fill lines and a durable, BPA-free construction, the **OXO POP Containers** really take organisation to the next level. The possibilities are endless and with 20 different sized containers available in the collection, you can transform cupboards, pantries and countertops with ease. RRP from £6.50 (POP Container Mini Square Mini – 0.2L). But as a start, I'd suggest investing in the 5 piece container set which gives a range of sizes. It's £55 and available from John Lewis, Costco and Amazon.



sunborn
GIBRALTAR
YACHT HOTEL RESORT



GIBRALTAR ROCKS PACKAGE

STAY ON THE ONLY PURPOSEFULLY BUILT 5 STAR FLOATING YACHT HOTEL IN THE WORLD AND EXPERIENCE A BRITISH TERRITORY IN THE MEDITERRANEAN!

2 nights in a Superyacht Deluxe Room

Substantial breakfast buffet including Full English Breakfast

Bubbly Afternoon Tea for 2 guests on the top deck

Discover Gibraltar's Top Attractions with Gibraltar Pass

Price £439.00 per package for 2 guests
(plus £3 per person / day tourism tax)



GibraltarPASS



BOOK NOW | WWW.SUNBORNGIBRALTAR.COM | RES@SUNBORNGIBRALTAR.COM

To say or not to say?

By Deep Patel

~ Through the Eyes of a Twickenham Shopkeeper ~



Have any readers here ever had that feeling where they doubt whether if what they said to someone was in fact the right or wrong thing to say...(be it an employer, work colleague or family member)?

...those times where you either wish that you had said something you were thinking of at the time...or the opposite, where you wish you hadn't said it at all...either way...I think it is safe to say that we have all been there...some of us more than others perhaps, but we have all been there right?...and I don't know about you, but for me as a shopkeeper, it's never been a comfortable experience to say the least...

They say "sticks and stones may break my bones, but words will never hurt me"...but they can can't they?...words can be sharper than a sword or softer than a pillow... words can be the jewelry that adorns us or the weapon that destroys us...either way... words are extremely powerful, and when used correctly, can make life wonderful, however when used incorrectly, can make life a living hell...So where am I going with this article I hear you ask?

Well, this week in my shop it became apparent to me just how powerful words can be...words that my customers say to me as well as words that I say back...

The main problem I have I find is knowing when to say something...and when to keep my mouth shut...staying quite could mean the person misses a compliment that may have made their day, particularly if they were having a challenging day... but saying something may cause offence or trouble of another kind...

It happens a lot to me on a daily basis...I will be serving a customer, and I will notice something about them, perhaps a nice shirt, or new hair style...I don't say anything as I don't want to seem flirty or overly fake, or like I am buttering them up...but then the next day learn the person in question was having a really bad day and maybe my words would have lifted them just when they needed it? Sometimes it can work the other way of course, when you say something, the person takes offence and you wonder why you said it in the first place...So what did I learn...?

Well, I learnt the best way to remember what is good to do is to remind yourself that if it is something nice you want to say to somebody, a compliment, or praise or to let them know how much you appreciate them, follow the "think it...say it" rule...as life is too short to hold back compliments...you never know how much your words may mean to the person you say them to...a few seconds out of your day to tell them how lovely their perfume smells, or how they have a lovely aura may make their entire day...I want to thank the lady who came into my shop this week to tell me how much she enjoyed reading my articles here each week...you inspired me to write this very article because of the kind words you said to me...think it...say it...When we have something nice to say, don't hold back...say it...if one candle is used to light many others...the room in total sum gets so much brighter...be the candle the lights many more in a world that so desperately needs your light...

Remember...

"Kindness is infectious...don't keep it to yourself...share it!"

MY CREATURE-KINDNESS TIP OF THE WEEK...

STOP ANY INSECT KINDLY (GOOD KARMA): Sprinkle pure essential peppermint oil, Olbas oil, fine black pepper or white vinegar around places where you don't want them to come (but NOT directly on them)...they will go without you having to harm them.

For ANY specific tip to stop any "pest" or insect KINDLY (for good karma/blessings), email me: InsectLoversUnite@gmail.com or join my Facebook page: "INSECT LOVERS UNITE"

One Million Tiny Plays about Britain

by Craig Taylor

RSS Junior Actors Company at the Mary Wallace Theatre, Twickenham

The task of reviewing one million plays is a daunting prospect, but thankfully 999,972 of them have been cut to leave a hand-picked selection for RSS's teenage cast. *One Million Tiny Plays* aren't quite plays, or playlets, or even sketches, but epigrammatic snippets, the sort of thing you overhear on the Clapham omnibus. They are tiny twists in the tail, but without the tail. These may be fragments but they are sharp fragments, with the cutting edge of everyday wit, overheard by a prolific fly on a big wall.



Paul Don Smith's set, with its inspired graphics by Fleur de Henrie Pearce, is a monochrome backdrop of unfurling discarded directories. Each scene is set in a stated location, and director George Abbott has actors come to the forestage for their dialogues in a formalised way, while the others sit reading the newspaper in the background. It has a broadcast feel about it, newscast or radio documentary.



Acting styles vary from bold stage presence to understatement. A consistent feature, though, is the actors' understanding of their characters.

Here is "all the human life there is", as a defunct newspaper used to say. Particularly touching is the down-and-out in a homeless shelter in Croydon who says, "It's nice that Jesus loves me, even though I'm smelly". It was

delivered with a deadpan sense of acceptance, but more piercing in its pathos for that.

Equally, there are throwaway punchlines delivered with good comic timing. The proprietor of a used record shop in Derby, trying to stem the expectations of a hopeful seller of an old album. "It's not the Sistine Chapel, you know". "Oh, I didn't know they were big at the time".

Even though each actor comes into the spotlight, figuratively as well as literally, the cast of ten remains uncredited for individual performances. With a lot of acting talent restrained in these few fragments, it would be great to see this company in a full-scale production.

One Million Tiny Plays about Britain provide an incisive insight into life in Britain today. Its wry comment and native humour is used to great effect by the young cast.

Read Quentin Weiver's review at www.markaspen.com/2024/06/27/million-tiny

Photography courtesy of RSSYAC



The Magic Flute

by Wolfgang Amadeus Mozart, libretto by Emanuel Schikaneder

Wild Arts at Layer Marney Tower and on tour until 22nd September

The Magic Flute, Mozart's last opera before his untimely death in 1791, could be seen as a final act of rebellion. It turned away from the Emperor's court, towards the showman Schikaneder, to be première, not in Vienna society, but in the Freihaus near the Prater public amusement park. Fittingly, director [James Hurley](#) presents *The Magic Flute* away from the London opera houses, in the far-flung ends of Essex where the landscape dissolves into rivers and estuaries. However, Layer Marney Tower is a handsome Tudor manor house, hosting country house opera at its most delightful, in a charming location where wide



visas of the Blackwater estuary go on for ever.



Although having pack-up-and-go utility, designer Sophie Lincoln's set is impressive. A tented drape above the stage, reminiscent of the iconic 1816 Karl Schinkel design, the midnight-blue starcloth is underlit by a circular rope-light. Symbolically, The Queen of the Night hovers ubiquitous, against the enlightenment of her nemesis Sarastro.

The monstrous creature that pursues Prince Tamino ([Richard Dowling](#)) is not the customary serpent, but three blood-red beasts. When he faints in fright, they transmogrify into The Three Ladies, in scarlet taffeta. Soprano Eleanor Oldfield, and mezzos [Martha Jones](#) and Abbie

Ward, incorporate the Spirits, usually boy trebles, into a more involved presence.

The bird-catcher Papagano is, by force of circumstances, a reluctant hero. He is everyman, who only wants someone special to love and share his life. The source of comedy in *The Magic Flute*, Papagano, award-winning Gareth Brynmor John, has great fun and clearly relishes the part.

Luci Briginshaw, a remarkable performer, makes a scary Queen of the Night; her flashing eyes would make most quake. The Queen's celebrated aria *Hölle Rache* is a challenging piece for any soprano, but [Briginshaw's](#) high tessitura really has tingle factor. In the role of Sarastro, lyrical bass [Trevor Eliot Bowes](#) has great stage presence. His treacle smooth singing voice is perfect for the character.

A joy of this production is its chamber orchestra, conducted by Orlando Jopling, who has [wide and varied experience](#) in opera and ballet. He keeps the work lively and bright, without losing any of its high drama. With a charming company, Mozart's wonderful music, played with verve by orchestra and singers, in an enchanting setting, this *Magic Flute* absolutely is ... magical!

Read Mark Aspen's review at www.markaspen.com/2024/06/23/magic-flute-wa

Photography courtesy of Wild Arts

Prince/David

by Yasir Senna

Razor Sharp Productions at the Golden Goose Theatre, Camberwell until 6th July

A lurid blood-red poster draws the audience into the première of *Prince/David*, so we know this will turn sinister very quickly.

The initial action is set in 1999, at a pub restaurant in Ealing, where 'Robert', posing as a hot-shot modelling scout offers a lifeline to Amber, a hopeful young model. Meanwhile, in the police station an old-school detective, DC Harewood is dismissive of the young PC Lisa Stecklen and her leads. While an authentic newsreel plays behind them, he orders the new recruit to make the tea.

Going forward over twenty years, the promoted DS Stecklen watches another news broadcast about how a David Nicholls had been sentenced for the murder of a young girl. Stecklen follows the courage of her convictions, remembering how quashed and patronised she was in '99, and now has chance to come into her own. Convinced that Nicholls was also Amber's killer, she questions a prisoner serving a sentence in Newcastle. Full of charm and confidence, Nicholls denies everything, smug in the knowledge that Amber's body had not been found. The story changes pace in the second act as Stecklen and her team speed up, determined to find Amber's body, researching every development since the end of the last century until they finally hit pay dirt.

As PC/DS Stecklen, Helen Matthews gives us just the right glimpse of personal trauma. Christopher Poke as old school DC Harewood metamorphoses into present day DCI Morgan, but one feels the actor is more comfortable in the latter role. The vulnerable Amber is engagingly portrayed by Helena Heaven.

The stark setting and severe costumes, designed by Wendy Parry, are very apt for this text and Beckett Gray's lighting design is effective in the limited space.

Prince/David is an absorbing and well-written drama. Sensitive and detailed direction by writer Yasir Senna makes for a memorable detective drama, while the poignant mention at the curtain call to the late actor McQueen Francis, who was known to the company, made this production complete.

Read Heather Moulson's review at www.markaspen.com/2024/06/28/prince-david

Image courtesy of Razor Sharp Productions



A Taste of Twickenham, The Cabbage Patch and THE EEL PIE CLUB
present



MARKY DAWSON



STEVE AND TAT WHALLEY



BLUES.SOUL – THE BAND



THE DEPUTIES



SUNDAY 30 JUNE 2024

Showtime 12:30 to 5:30pm.

Patchworks @ The Cabbage Patch

67 London Road, Twickenham

FREE!!

Opera in the Garden

By Alison Jee

If you can still get tickets for **Opera in the Garden**, one of the live events being offered this summer by Fuller's pubs, I would urge you to do so.

We saw a performance of **Carmen**, Bizet's famous opera, at **The Red Lion in Barnes** last week.

It was fabulous, with a cast of just four, each of whom was a highly talented opera singer.

In a new interpretation of this classic, **Rogue Opera** brings Carmen to life for a modern audience, sung in French with a new English script.

The singers and amazing pianist deliver an engaging and highly original format.



As the story unfolds, you follow the four main protagonists; Carmen, José, Escamillo and Micaëla, along with Captain Moralès, and the gypsies Frasquita and Dancaïre. The characters share their motivations and inner thoughts with the audience, bringing a fresh perspective and making it a fantastic experience for opera connoisseurs and newcomers alike.



Carmen lives a bohemian life, seeking freedom outside of the law. José, drawn to Carmen and this unconventional world, is torn between love, duty and honour. Micaëla, the loyal and pious village girl, finds strength and courage as she tries to bring José back from his outlaw's life. The charismatic bullfighter Escamillo is infatuated with Carmen, recognising a kindred spirit, while Moralès, the captain, embodies everything that the gypsies, Frasquita and Dancaïre are not. Set against some of the most recognisable music in opera, Carmen is a serious and still-relevant examination of the restrictions of societal stereotypes, obsessive love and the struggle of a spirited woman striving for independence and choice.

A QR code on the back of the menu shows the programme in full on your phone, and you can click on an icon beside each song for the lyrics.

The full programme of venues is on the link [here](#) but for locals you can catch it on July 31 at The Plough in Northfields, August 2 at the Forrester in Ealing August 4 and 5 at The Angler's in Teddington. There are quite a few other places on the schedule, and it's worth the trip.

HAMPTON CHORAL SOCIETY

Maurice Duruflé - Requiem
John Rutter - Requiem

Musical Director - Richard Harker
with professional soloists

Saturday 29 June 2024 - 7.30pm

St James's Church, St James's Road,
Hampton Hill, TW12 1DQ

Tickets: £15 (Adults), £7 (Under 16's)

Box Office: 020 8941 5394

on the door: contactless, card, cheque, cash
www.hamptonchoral.org.uk

St Mary's University

St Mary's Launches Weekly Student Film Premieres

The School of Liberal and Creative Arts (SCALA) at St Mary's University, Twickenham (SMU) has launched weekly film premieres showcasing a new student short film over the next seven weeks.

The School of Liberal and Creative Arts (SCALA) at St Mary's University, Twickenham (SMU) has launched weekly film premieres showcasing a new student short film over the next seven weeks.

Short films directed by undergraduate students on the [Film Studies BA](#) degree at SMU will be released every Friday at 5pm on the course's [YouTube channel](#). The final film will go on Friday 2nd August at 5pm.

appearances.

Students from the [BA Acting course](#) at SMU have featured in the films, alongside musicians from the [Guildhall School of Music and Drama](#).

The complete order of film premieres is as follows:

- Play With Fire
- Salt & Pepper
- Home For the Holidays
- The Watcher
- Robust Love
- Olivia
- Natalmare.

Speaking on the premieres SMU Senior

Lecturer in Media Arts Lee Brooks said, *"It has been a great pleasure this year, as with every previous one, to teach groups of talented and enthusiastic filmmakers at all three undergraduate levels. The work they have produced in collaboration with some great actors, including from our BA Acting programme, and a group of very talented musicians at the Guildhall School of Music and Drama is a testament to both their abilities and*

their enthusiasm to learn. We are very proud to be able to present this work to a wider audience during this premiere season."

The first short premiered last Friday and was directed by student Hussam Daoud. Hussam's film [Play With Fire](#) is a tense and stylish thriller in which a shady businessman is murdered.

This coming Friday's short film was directed by Alice Giuduci and is titled *Salt & Pepper*. The film explores the deceptiveness of

All of the short films and the St Mary's Film YouTube channel can be found [here](#).



**St Mary's
University
Twickenham
London**

Art and Design Students Showcase End-of-Year Exhibition



[Art and Design](#) students at Richmond upon Thames College (RuTC) worked hard to produce their final pieces of work for their end-of-year exhibition. The exhibition covered a variety of different themes and briefs and was displayed throughout the RuTC campus building. The exhibition began with a private view for students' families and friends at the final open event of the year in June, where there was lots of delight and enthusiasm for the artwork presented.

A few classes within the cohort also had their works showcased in local art galleries and museums, for the public to view.

Students from our [UAL Level 2 Art, Design and Media](#) course celebrated the opening of their final exhibition at the Museum of Richmond on the evening of the 19th of June. Each student spent many weeks developing an individual response to the brief about travel and tourism in Richmond, creating works ranging from ceramics to textiles, digital art to drawing and photography to painting. The event was launched with a speech by Vicky McGrath, Learning and Audience Development Officer at the Museum of Richmond, who acknowledged the skills and imagination of the students at RuTC.



Students studying the [UAL Level 3 Foundation Diploma](#), [HNC Level 4 Graphic Design](#) and [Access to HE - Art and Design](#) students have their final major project, 'Experimental Resolution' displayed at [Orleans House Gallery](#), in Twickenham. This is part of a partnership between Richmond Arts Service and RuTC. Students worked with established artists and sector professionals since February to develop their artistic practice and knowledge of becoming working artists. For this exhibition, the artists

presented a range of visual language, responding to the theme of 'experimentation'. Their work included painting, photography, sculpture, architecture, interior design and graphic design. Our students took on all roles to produce the exhibition, including marketing, interpretation and project management, and creating the artwork.

[View the exhibition at Orleans House Gallery until 7th of July 2024.](#)

[Find more about Art and Design courses and apply to RuTC here.](#)



Richmond upon
Thames College

Kew Gardens, Primrose Hill, Queen's Park in Glasgow and Birmingham's Sutton Park The UK's Top Urban Picnic Spots Revealed, According to City Dwellers

The summer is finally here, and new research has revealed the most scenic spots for city dwellers to enjoy a picnic, with Kew Gardens coming top of the list (26 percent). Following close behind was London's Hyde Park (25 percent) and Richmond Park (19 percent), while Sefton Park in Liverpool (9 percent) and Sutton Park in Birmingham (9 percent) also fared well in the list.

The research, commissioned by [Chase Distillery](#), also reveals Britons love Holyrood Park (ten percent) and Calton Hill (nine percent) in Edinburgh (ten percent) as well as Glasgow's Kelvingrove Park (nine percent). Other parks to make the list were Preston Park, Brighton (nine percent), Bute Park in Cardiff (eight percent), the Belfast Botanical Gardens (eight percent), Knole Park in Kent (eight percent), the Quarry in Shrewsbury (eight percent), Woodhouse Moor, Leeds (eight percent) and Stanley Park, Blackpool (eight percent).

However the average city dweller spends just 26 hours in nature a month, while in ten (92 percent) wish they could spend more time outdoors, blaming a lack of time (53 percent), work pressures (43 percent) and living in a city (20 percent). It's no surprise that one in ten (11 percent) of the 2,000 urbanites polled struggle to access nature.

To help, **Chase Distillery** is showing the nation how they can access a slice of countryside wherever they are, this summer. A Chase Distillery spokesperson said: *"Everyone should have access to a slice of the countryside, wherever you are. From providing us with somewhere to relax and unwind to being a place where we can grow food, the benefits of the great outdoors are immeasurable. We're huge champions of the fusion of nature and urban living."*

Three quarters (74 percent) said that being in the great outdoors is good for their mental health, with over half (52 percent) admitting that some of the most positive and relaxed people they know are nature lovers. While 36 is the age we start to connect and appreciate nature, according to the poll.

Four in ten (45 percent) say that nature gives them the chance to take a deep breath and appreciate life, while almost a third (31 percent) are inspired by nature and believe that being in the great outdoors fuels their creativity. The research reveals that 71 percent agree that we learn to appreciate nature more the older we get.

Two thirds (60 percent) agree that outdoor pursuits have become more popular in recent years, with 45 percent believing that social media has made it trendy to get back to nature and spend more outside so much so that one in three (35 percent) think that younger people enjoy getting back to nature more than previous generations.

The UK's Best Urban Picnic Spots, According To Brits

*Respondents Were Given A Big List Of UK Parks And Urban Green Spaces And Asked To Pick Their Favourites. The Following List Is The Top 20, As Ranked By Percentage.

- | | |
|---------------------------------|--------------------------------------|
| 1. Kew Gardens, London 26% | 11. Sutton Park, Birmingham 9% |
| 2. Hyde Park, London 25% | 12. Preston Park, Brighton 9% |
| 3. Richmond Park, London 19% | 13. Calton Hill, Edinburgh 9% |
| 4. Hampstead Heath, London 12% | 14. Bute Park, Cardiff 8% |
| 5. Primrose Hill, London 11% | 15. Belfast Botanical Gardens 8% |
| 6. Queen's Park, Glasgow 10% | 16. Knole Park, Kent 8% |
| 7. Holyrood Park, Edinburgh 10% | 17. The Quarry, Shrewsbury 8% |
| 8. Bushy Park, London 10% | 18. Woodhouse Moor, Leeds 8% |
| 9. Kelvingrove Park, Glasgow 9% | 19. Stanley Park, Blackpool 8% |
| 10. Sefton Park, Liverpool 9% | 20. Chelsea Physic Garden, London 8% |

U20 Men Confirm Team to Face Argentina

The first England U20 Men's matchday 23 of the 2024 World Rugby U20 Championship has been confirmed, as Mark Mapletoft's men ready themselves for the challenge of Argentina.

England U20 Men take on Los Pumas this Saturday (29th, 13:00 BST kick-off) at Athlone Stadium, with the fixture available to view live on RugbyPass TV.

Finn Carnduff continues his leadership role as captain of the U20 Men side after leading his country to Under-20 Six Nations glory for the first time in three years back in March. Leicester Tigers' Carnduff has since made his full Gallagher Premiership debut and appeared in a Heineken Champions Cup fixture against Leinster Rugby. Wing Jack Bracken (Saracens) and scrum-half Ollie Allan (Leicester Tigers) will earn their first competitive U20 Men's caps for England against Alvaro Galindo's side. Replacements Cam Miell (Leicester Tigers), Lucas Friday (Harlequins) and Ben Coen (Exeter Chiefs) could also be in line for their maiden U20 appearances.

Eighteen of the matchday 23 have featured for Mapletoft in the recent Under-20 Six Nations campaign, with seven of those returning for their second World Rugby U20 Championship in South Africa this summer. Following on from the U20 Men's squad announcement, Louie Gulley of Exeter Chiefs joins up with the team and replaces Newcastle Falcons' Jacob Oliver in the touring party for the tournament's remainder. The pathway side have emerged victorious in three previous meetings with Argentina at the U20 Championships, with their last meeting in 2018 seeing Ben Curry and Marcus Smith star in a 39-18 win for England.

Looking ahead to Saturday's fixture, Mark Mapletoft spoke of the team's anticipation to return to the international stage at Athlone Stadium.

"The coaches and I have been encouraged with the ownership taken by this group in training," he said. "Their impressive effort made selection no easy task, and I would like to congratulate all on their work ethic and determination. We're looking to see these high standards maintained through our replacements who will energise the group throughout what will be a thoroughly demanding opening game against Argentina. Our boys are keen to make the first positive step this Saturday and continue their exemplary displays of Brotherhood this week into a match scenario."

England U20 Men's team to face Argentina (includes current club, community club and U20 caps)

15 Ben Redshaw (Newcastle Falcons, West Park Leeds RFC, 5 caps)
14 Jack Bracken (Saracens, Barnet Elizabethans RFC, uncapped)
13 Oli Spencer (Newcastle Falcons, Epping Rams Rugby, 5 caps)
12 Sean Kerr (Harlequins, Sutton and Epsom Rugby Club, 4 caps)
11 Alex Wills (Sale Sharks, Droitwich Rugby Club, 7 caps)
10 Josh Bellamy (Harlequins, Rosslyn Park, 4 caps)
9 Ollie Allan (Leicester Tigers, Hungerford RFC, uncapped)

1 Asher Opoku-Fordjour (Sale Sharks, Broadstreet RFC, 14 caps)
2 Craig Wright (Northampton Saints, Braintree Rugby Club, 5 caps)
3 Billy Sela (Bath Rugby, Royal Wootton Bassett RFC, 5 caps)
4 Joe Bailey (Exeter Chiefs, Newton Abbot RFC, 5 caps)
5 Junior Kpoku (Racing 92, Saracens Amateurs, 4 caps)
6 Finn Carnduff (c) (Leicester Tigers, Market Harborough RFC, 15 caps)
7 Henry Pollock (Northampton Saints, Buckingham Rugby Club, 5 caps)
8 Nathan Michelow (Saracens, Brentwood Rugby, 10 caps)

Replacements

16 James Isaacs (Saracens, Hemel Hempstead Camelot RFC, 3 caps)
17 Cameron Miell (Leicester Tigers, Paul Roos, uncapped)
18 Afolabi Fasogbon (Gloucester Rugby, Bishop Wand School, 11 caps)
19 Olamide Sodeke (Saracens, Blackheath Rugby Club, 4 caps)

20 Kane James (Exeter Chiefs, St Peters RFC, 4 caps)
21 Lucas Friday (Harlequins, Bromley RFC, uncapped)
22 Benjamin Coen (Exeter Chiefs, Teignmouth RFC, uncapped)
23 Ioan Jones (Gloucester Rugby, Minchinhampton RFC, 4 caps)

England U20 Men's 2024 World Rugby U20 Championship fixtures

Matchday 1 (29 June) - England vs. Argentina – Athlone Stadium - (13:00 BST kick-off)

Matchday 2 (4 July) - England vs. Fiji – Athlone Stadium - (15:30 BST kick-off)

Matchday 3 (9 July) - South Africa vs. England – Athlone Stadium - (18:00 BST kick-off)

Knockout matches

Matchday 4 (Sunday 14 July)

Matchday 5 (final and ranking matches, Friday 19 July)



The Brentford players at Euro 2024: Where to watch round of 16 matches

Mark Flekken (Netherlands); Zanka, Christian Nørgaard, Mathias Jensen and Mikkel Damsgaard (Denmark); and Ivan Toney (England) are all set for Euro 2024 knockout action over the coming days. Find out when, where and how to watch the Bees players in the round of 16

Written by Brentford Football Club

Six Brentford players are set for Euro 2024 knockout action over the coming days.

Mark Flekken (Netherlands); Zanka, Mathias Jensen, Christian Nørgaard and Mikkel Damsgaard (Denmark); and Ivan Toney (England) will all be representing their respective nations in the round of 16.

And here's all you need to know about when, where and how to watch the Bees players in Germany. All kick-off times are GMT, with UK TV coverage information.

Zanka, Mathias Jensen, Christian Nørgaard, Mikkel Damsgaard – Denmark
Germany v Denmark | Saturday 29 June, 8pm | BVB Stadion, Dortmund | ITV

Denmark finished runners-up to England in Group C, drawing all three of their group-stage games.

Christian Nørgaard featured against Slovenia and England as a second-half substitute, while Mikkel Damsgaard played just over half an hour in the 1-1 draw with the Three Lions.

Ivan Toney – England

England v Slovakia | Sunday 30 June, 5pm Arena AufSchalke, Gelsenkirchen ITV

England topped Group C with five points from three matches.

Bees striker Ivan Toney has been unused so far and will be hoping to make an impact in the knockout stage.

Watch England's game against Slovakia at Gtech Community Stadium; tickets for Sunday's screening are [available now](#).

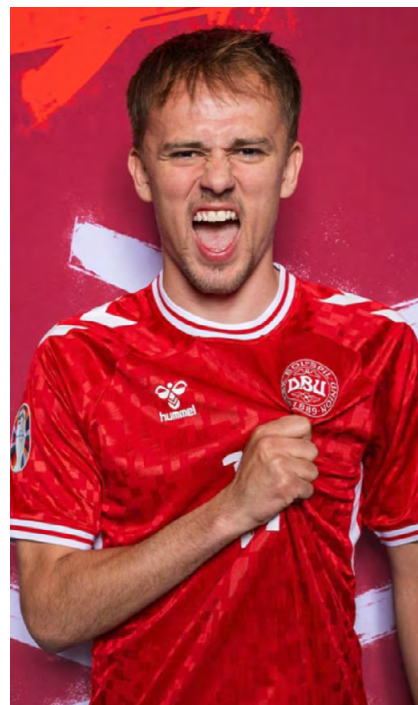
Mark Flekken – Netherlands

Romania v Netherlands | Tuesday 2 July, 5pm | Allianz Arena, Munich | BBC

Netherlands got off to a winning start, beating Poland 2-1 in their opening Group D game, but a goalless draw with France and 3-2 defeat to Austria saw them finish third.

Goalkeeper Mark Flekken has been an unused substitute so far, with Brighton's Bart Verbruggen chosen between the sticks.

David Raya, on loan from Brentford at Arsenal, is part of the Spain squad set to face Georgia on Sunday 30 June (8pm kick-off), live on ITV.



BA passengers left bagless as experts offer tips on handling lost luggage

On Tuesday night, British Airways' IT failure left passengers 'stranded on planes' and massive queues of travellers spread across the airport.

Struggling to find their luggage, travellers were forced to travel without their clothes and faced huge delays to try and get possessions back due to a technical issue at Terminal 5.

If you lose your luggage at a UK airport, a **spokesperson for [Claims.co.uk](https://www.claims.co.uk)** shares what steps you should take.

"Go to the airport's baggage claim area and find the lost luggage desk or the airline's baggage services counter and report the lost luggage as soon as possible. Provide details such as your luggage tag number, flight number, and a description of your luggage.

"You will also likely need to fill out a Property Irregularity Report (PIR), which is a formal document that records the details of your lost luggage. Make sure you obtain a copy of this report and a reference number for follow-up purposes.

"It is also important to keep hold of all documentation related to your travel and lost luggage, including boarding pass, and luggage tag receipts, as you will need these to make a claim later.

"Many airlines have online systems where you can report and track lost luggage. Therefore, it is important to contact the airline and provide your PIR reference number.

"If your luggage is declared lost, which is usually after 21 days, you can claim compensation from the airline. The airline's policy should state compensation limits and documentation required.

"It is also worth contacting your travel insurance company and file a claim for your lost luggage and provide all of your relevant documentation."

How to claim for a flight delay on a package holiday?

A spokesperson for [Claims.co.uk](https://www.claims.co.uk) adds,

"Whilst booking a package holiday can slash the cost of going away, if your flight is cancelled you can risk having your whole holiday cancelled or rearranged.

"If you have booked a package holiday and your flights are cancelled, you have the rights to either claim a full refund, a reroute of the trip destination and potentially compensation from the airline.

"However, in these specific circumstances, delays and cancellations caused by air traffic control restrictions are considered an 'extraordinary circumstance' and therefore do not qualify for compensation.

"In cases of flight delays and flight cancellations due to an 'extraordinary circumstance,' the airline must provide you with additional services, depending on the length of your delay and waiting time.

"These additional services include free meals and refreshments, which you are entitled to when your flight is delayed by at least 2 hours. Passengers should also receive a free overnight accommodation and a transfer to and from the airport if the flight is shifted to the next day.

"If a travel operator needs to cancel a package holiday for any reason, they are required to notify you as soon as possible and without undue delay. This is to ensure that you have enough time to help

you make alternative arrangements or seek refunds.

“However, in many people’s case due to the disruption, if you are at the airport when the flight is cancelled, it is advised that you contact your travel company straight away to talk through your options.

“If the delay lasts more than five hours, but is not actually cancelled, you should also be able to choose not to travel and get a full refund on your ticket.

“If your flight cannot be rearranged, meaning your whole holiday must be cancelled, then the travel company must offer an alternative holiday if possible, or a refund of the full package price, not just the flight part.”

What is the best option?

If you are wondering whether to claim a full refund or reschedule your holiday, this depends on personal circumstances.

There are several factors you can consider making this decision:

Refund Amount- if the travel operator is offering a full refund, this could be financially more appealing, especially if you are uncertain about your future travel plans.

Availability- consider if the dates the travel operator offers you are a suitable alternative date for your original trip. If the new dates do not align with your schedule, rescheduling might not be a viable option.

Change Fees: check if the travel operator is waiving any change fees for rescheduling. Some operators might impose fees for changing travel dates, which could impact your decision.

Travel Insurance: if you have travel insurance, review your policy to see if it covers cancellations or changes due to unforeseen circumstances. This might influence your decision to reschedule or opt for a refund.

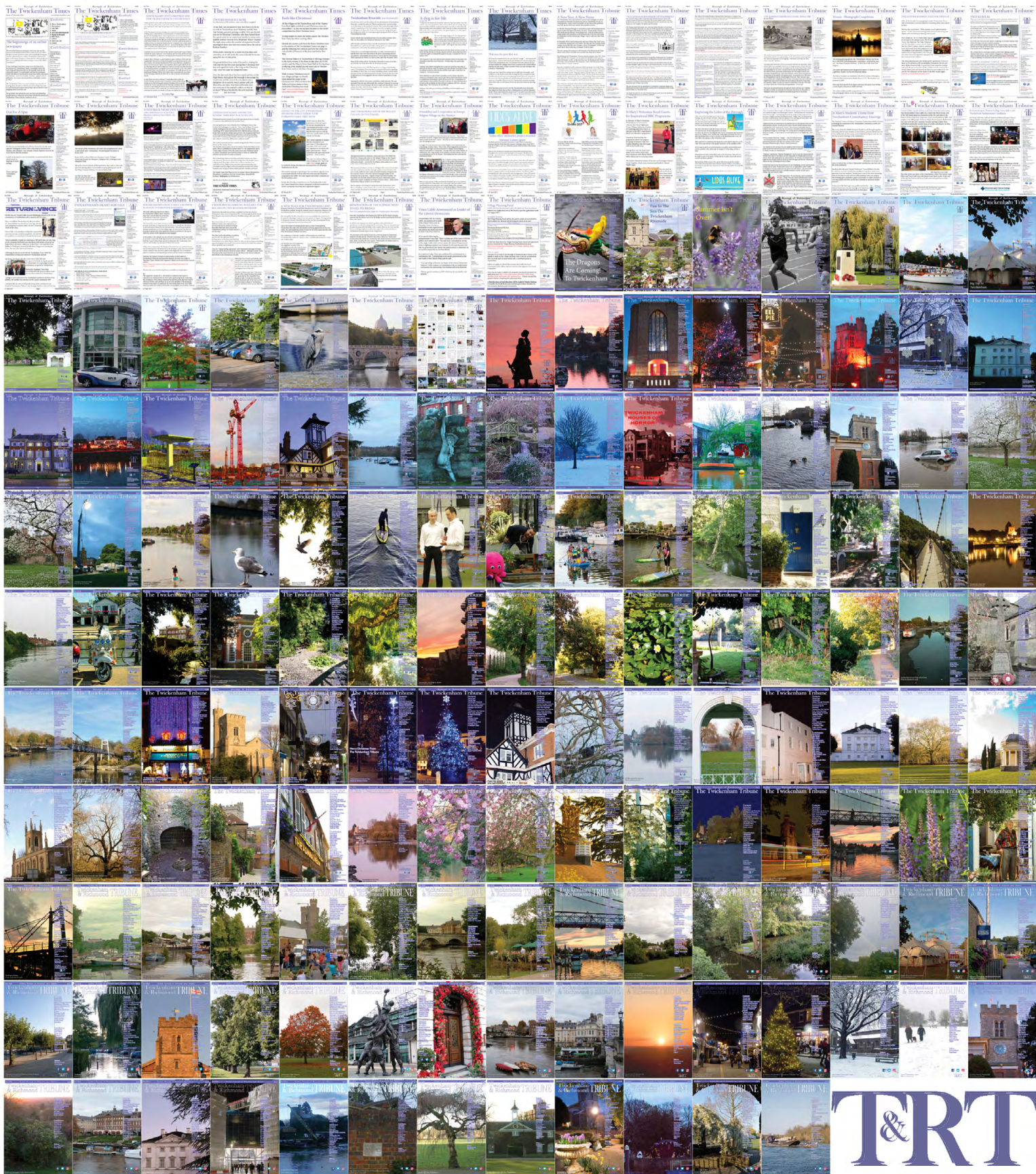
A spokesperson for [Claims.co.uk](https://www.claims.co.uk) adds,

“If you received less than 14 days’ notice of the cancellation, you can claim compensation. This can be awarded in pounds or euros depending on where your flight was due to depart from.”

The awards are according to the following scale:

- £220 / €250 for all flights of 1,500km or less (e.g. Glasgow to Amsterdam);
- £350 / €400 for all flights between 1,500km and 3,500km (e.g. East Midlands to Marrakech);
- £520 / €600 for all other flights (e.g. London to New York).

399 editions of the **Twickenham & Richmond Tribune** online - Lots to read: News, Reviews, History, Sports and On-going Sagas in the Borough of Richmond upon Thames



Half Page

Quarter Page
Landscape

Quarter Page Portrait

Eighth Page

Eighth Page
Landscape

Example advert sizes shown above

Thousands read The Twickenham & Richmond Tribune

If you are reading this you could be advertising your business with
The Twickenham & Richmond Tribune. Community rates are
available

Contact: advertise@TwickenhamTribune.com

View ad details at www.TwickenhamTribune.com/advertise

Contact

contact@TwickenhamTribune.com
letters@TwickenhamTribune.com
advertise@TwickenhamTribune.com



Published by:

Twickenham & Richmond Tribune (in association with World InfoZone Limited)

Registered in England & Wales

Reg No 10549345

The Twickenham Tribune is registered with the ICO under the Data Protection Act, Reg No ZA224725

©Twickenham & Richmond Tribune. All rights reserved. No part of this publication may be used or reproduced without the permission of Twickenham & Richmond Tribune. While we take reasonable efforts, this online newspaper cannot be held responsible for the accuracy or reliability of information. The views and opinions in these pages do not necessarily represent those of The Twickenham & Richmond Tribune.

[Terms & Conditions](#)